

Take this link to register online!

[http://
nationalupholsteryfurnitureframeworkshop2017
.eventbrite.com](http://nationalupholsteryfurnitureframeworkshop2017.eventbrite.com)



Upholstery and frame manufacturers have improved the making of lumber and panel frames such that there orders no longer have to wait for frames to be made to get orders started.

Workshop Timetable

- 8 am to 9 am-Coffee and Visiting
- 9 am to noon-three sessions with breaks
- Noon to 1 pm-lunch
- 1 pm to 4 pm-three sessions with breaks
- Ends at 4 pm

No Registration Fee!

Please go online to register to provide a head count and reserve your space!

Additional information contact:

Harry Watt
Cell 704-880-3067
harry_watt@ncsu.edu
<http://outreach.cnr.ncsu.edu/ncwood>

A No Charge Educational Event!

Downtown Conover Location!



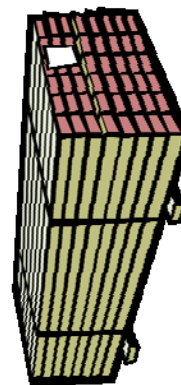
Community Room at Conover Station
403 Conover Station SE
Conover, North Carolina
phone 828-464-0750

NCSU, WERC MSC & CVCC are equal opportunity providers



NCSU Wood Products Extension
Campus Box 8003
Raleigh, NC 27695

A Great Educational Opportunity!



2017 Upholstery Frame Workshop

**Thursday,
November 9th, 2017
Community Room at
Conover Station**

**Downtown Conover,
North Carolina**

No Cost to Attend!

Sponsors & Partners



Wood Products Extension

**Catawba Valley
Community College**



This is a unique event for the upholstery furniture industry in the markets of institutional, hospitality, household and contract..

We typically have attendees from all segments of the upholstery furniture industry

Upholstery Frame Workshop—Thurs, Nov. 9th, 2017-Conover, NC

Who Can Benefit From Attending the Upholstery Frame Workshop?

- * Frame manufacturers
- * Frame designers
- * Frame engineers
- * Upholstery mfg. managers
- * Frame shop managers/employees
- * Vendors of materials, equipment, software and supplies

2016 Frame Workshop Topics

Latest updates on-

- CVCC Furniture Academy update
- CNC equipment for panels
- Reports from material vendors-lumber, plywood, OSB
- New topics in design software
- Setting labor rates for upholstery work
- Improving material yields
- Spindle options for CNC routers
- CNC tooling best practices
- Use of roller holddowns for panels
- Vendor info tables available

Looking for Meal and Break Sponsors

We are looking for equipment companies, frame manufacturers, upholstery manufacturers, material vendors, supplies vendor and anyone else who would like to help cover the cost of providing meals and refreshments, please contact Harry Watt. Vendor deadline of October 31st.

The City of Conover provides our use of the public room at no charge and multiple vendors pick up the costs of lunch.



Minor species eastern hardwoods species like sweet gum and wormy red maple work well for upholstery frames as they are soft hardwoods that accept staples and screws without splitting. These species are widely available in lumber and plywood panels.

Join in the day-long discussions on a variety of frame issues relating on being on the cutting edge of frame making



Upholstery frame workshops are well attended with the emphasis on education and networking-we expect 75-100 to attend.

WERC Sponsor Notice:

This workshop is funded through a grant awarded by the Wood Education and Resource Center, Northeastern Area State and Private Forestry, U.S. Forest Service.

This one day workshop offers upholstery industry professionals the opportunity to gain educational information and to network with fellow frame designers, engineers and manufacturers.

Most frame makers and upholstery manufacturers have improved their making of frames so much that many companies have reduced inventory and cut manufacturing times for frames while reducing lot sizes.

There is no charge to attend this educational and networking event for the upholstery furniture industry.



Workshop Info Contact

Harry Watt
NCSU Wood Products Extension
Phone 704-880-3067
Email: harry_watt@ncsu.edu